

FISHWAY STATUS REPORT

Date: 9/16/2012
 Inspection Period: 9/9 - 9/15/2012

THE DALLES DAM



**US Army Corps
of Engineers**
Portland District

The Dalles Project-Fisheries
 P.O. Box 564
 The Dalles, OR 97058-9998
 Phone: 541-506-3800

Fishways are inspected twice daily. Additional daily monitoring done via automation system in fisheries office.

The Dalles Dam	Inspections	Criteria	Total Number of Inspections: 21		Temperature: 67.4 F
NORTH FISHWAY	Out of Criteria	Limit	Comments		Secchi: 5.2 Ft.
Exit differential	0	≤ 0.5'			
Count station differential	0	≤ 0.3'			
Weir crest depth	0	1.0' ± 0.1'			
Entrance differential	0	1.0' - 2.0'	Average 1.3	Daily differentials & weir depths, see AVGS tab.	
Entrance weir N1	0	depth (≥ 8')	Average 9.0		
Entrance weir N2		Closed	Bulkhead installed		
PUD Intake differential	0	≤ 0.5'	Trash rack raked on 9/14.		
EAST FISHWAY					
Exit differential	0	≤ 0.5'			
Removable weirs 154-157	0	Per forebay	Auto adjusts 1' increments.		
Weir 158-159 differential	0	1.0' ± 0.1'			
Count station differential	0	≤ 0.3'	Picket leads raked on 9/12 and 9/10. Window cleaned 9/12.		
Weir crest depth	0	1.0' ± 0.1'			
Junction pool weir JP6	0	depth (≥ 7')	Manually adjusted as needed.		
East entrance differential	0	1.0' - 2.0'	Average 1.5	Daily differentials & weir depths, see AVGS tab.	
Entrance weir E1	0	No criteria	Average 7.5	Manually adjusted.	
Entrance weir E2	0	depth (≥ 8')	Average 10.1		
Entrance weir E3	0	depth (≥ 8')	Average 10.2		
Collection channel velocity	0	1.5 - 4 fps	Average 2.1	See Velocities tab for more complete information.	
Transportation channel velocity	0	1.5 - 4 fps	Average 2.8		
North channel velocity	0	1.5 - 4 fps	Average 2.6		
South channel velocity	0	1.5 - 4 fps	Average 3.5		
West entrance differential	0	1.0' - 2.0'	Average 1.3		
Entrance weir W1	0	depth (≥ 8')	Average 8.2		
Entrance weir W2	0	depth (≥ 8')	Average 8.2		
Entrance weir W3	0	No criteria	Average Closed		
South entrance differential	0	1.0' - 2.0'	Average 1.5	Daily differentials & weir depths, see AVGS tab.	
Entrance weir S1	0	depth (≥ 8')	Average 8.6	Manually adjusted.	
Entrance weir S2	0	depth (≥ 8')	Average 8.6		
JUVENILE PASSAGE					
Sluiceway operation	0	units 1,8,18			
Turbine trashrack drawdown	0	<1.5', wkly	Range: 0.1' - 1.7'		
Spill volume	N/A	40%, 24hr	On seal		
Spill Pattern	N/A	per FPP			
Turbine Unit Priority	0	per FPP			
Turbine 1% Efficiency	0	per FPP			

OTHER ISSUES:**THE DALLES****Birds:**

Bird observations mostly consist of cormorants resting either on rocks near east fishladder entrance or roosting on the north towers. See bird tab below for information on species, number and location. Fisheries personnel are collecting bird count data twice daily.

Operations:

Gatewell drawdown was completed on 9/14. All differentials were within criteria and ranged from 0.1' - 0.7'.

Mr. Robert Cordie will be on leave from 9/17 to 9/20. Fisheries cover for 9/17 to 9/18 will be Jeff Randall and Paul Keller for 9/19 to 9/20.

Mr. Robert Cordie attended the Fish Passage Operation and Maintenance (FPOM) meeting on 9/13. Peoples Utility District (PUD) proposal for second turbine on north fishway, spillgate 9 trunnion pin plan, avian hazing '13 plan, night fishway operation for lamprey and fishway dewatering schedule was discussed.

Maintenance:

Maintenance raked the Peoples Utility District (PUD) trash rack 9/14.

Draft fishway dewatering schedule out for review.

Winter maintenance to include east fishladder diffuser grating install completion and the north fishladder brush removal.

Current Outages:

MU11 out of service 7/30 0746 hrs. to 9/13 for five year overhaul, as built, generator heaters, heat exchangers, and cavitation.

MU13 out of service 8/13 0705 hrs. to 9/20 1700 hrs. for digital governor install and annual maintenance.

MU22 out of service 9/4/ 0609 hrs. to 10/11 1700 hrs. for digital governor install and annual maintenance.

Studies:

The Adult PIT Antennae Study Team is investigating a temporary installation of a thin-bodied antenna for use in the count station windows pinch down area before a more permanent system is installed. The antennae will use ferrite tiles and planned to be installed this winter at the count stations. PSMFC will send additional information on equipment footprint and power needs. Project support is expected to be minimal. See Picture tab below. A conference call was held 9/12 at 1000 hrs. Permanent system alternatives include at count station and weirs near count station.

Inland Avian Predation Work Group (IAPWG) is scheduled to meet at Westrick 9/27 from 0900 hrs. to 1700 hrs.

Research/Contractors:

United States Fish and Wildlife dual frequency identification sonar (DIDSON) camera testing continues at North Fishway exit for lamprey detection.

The Columbia River Northern Pikeminnow Management Program Dam Angling: Dam anglers are focusing at John Day and may return to The Dalles before the end of season .

Oregon Fish and Wildlife have concluded Columbia River Predator Control Program bass angling activities at The Dalles. Results pending.

The final season for Pacific Northwest National Laboratory (PNNL) juvenile acoustic telemetry completed. Summer testing results for 2012 pending.

The Dalles Dam Structural will hoist the PNNL trailers onto the road deck 9/19. Pacific Mobile will remove the trailers from the project 9/26.

A dive contract is expected to occur this winter in order to remove all spillway and powerhouse equipment. This will include derelict USGS equipment from previous studies.

Washington Department of Fish and Wildlife fish counters continuing 16 hr./day through the end of October.

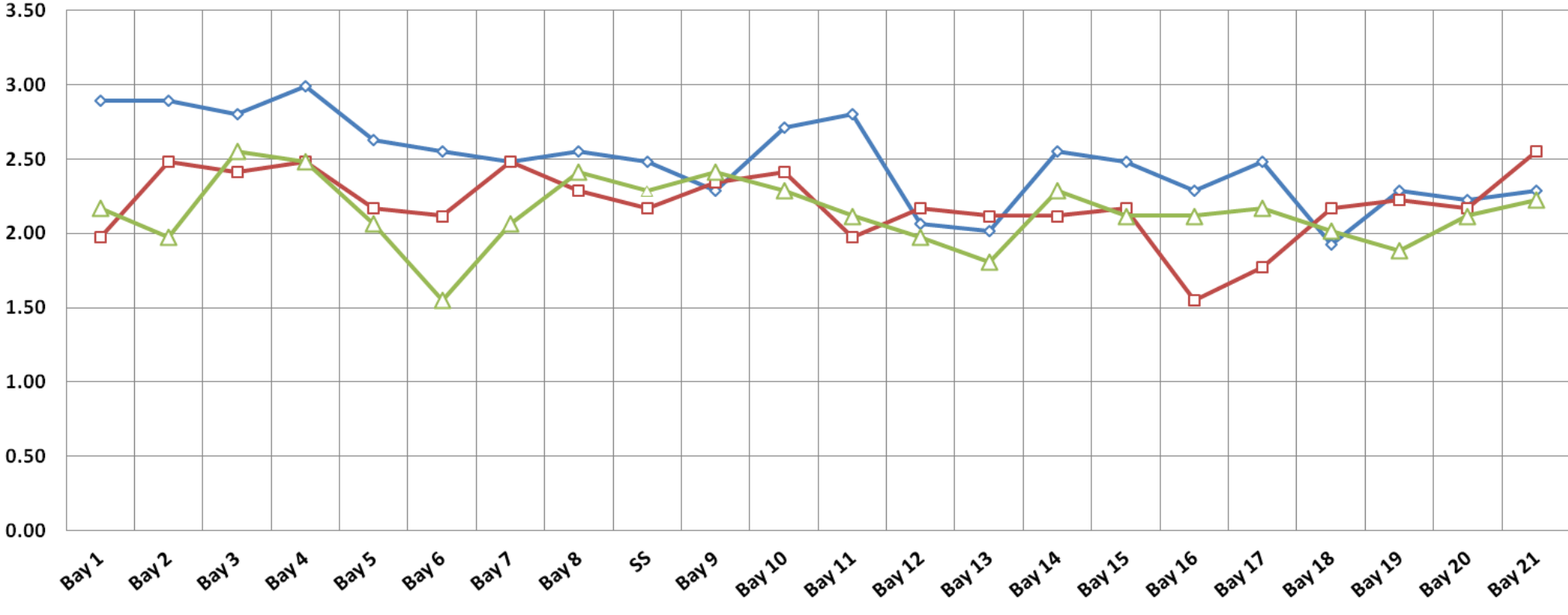
Approved by;
Ron D. Twiner
Operation Project Manager
The Dalles Dam

The Dalles Dam Fish Counts

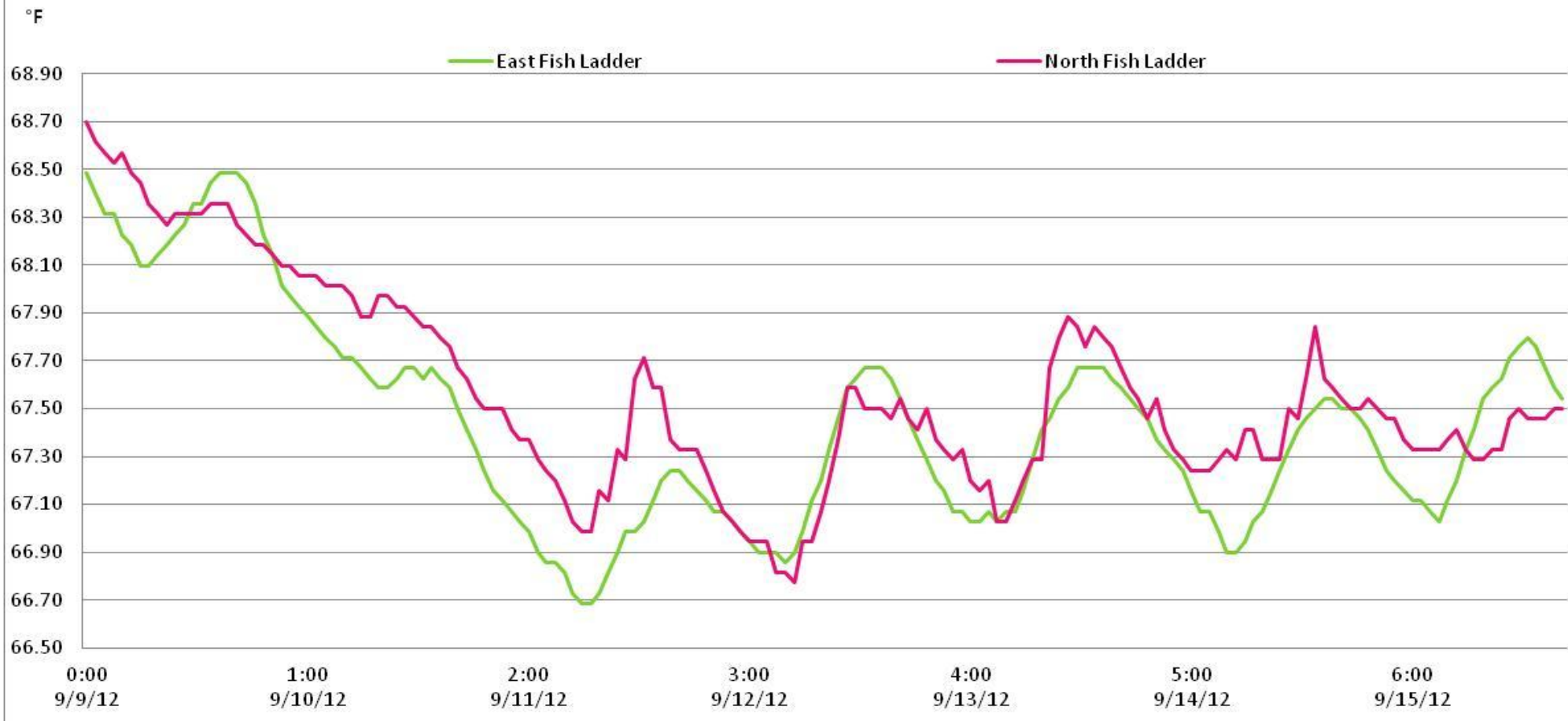
The Dalles Dam Fish Counts																			
Date	East	North	East	North	Total	Total	East	North					East	North					
	Chinook	Chinook	Chinook	Chinook	East	North	Unclipped	Unclipped	East	North	East	North	Coho	Coho	East	North	East	North	Spill
	Adult	Adult	Jack	Jack	Sthd	Sthd	Sthd	Sthd	Sock	Sock	Coho	Coho	Jack	Jack	Lamprey	Lamprey	Pink	Pink	Volume
9-Sep	7698	913	2321	356	2208	580	269	132	0	0	1168	253	60	10	36	17	0	0	0
10-Sep	7769	746	2998	281	2546	422	1190	61	0	0	1098	220	92	23	34	7	0	0	0
11-Sep	8281	380	2796	246	2103	253	890	68	0	0	838	72	52	14	30	20	0	0	0
12-Sep	6882	288	2611	206	1665	185	518	37	0	0	462	43	56	7	18	14	0	0	0
13-Sep	4530	168	1898	164	1642	177	480	26	0	0	460	54	20	6	16	19	0	0	0
14-Sep	5879	236	2156	161	2218	234	519	61	0	0	478	71	41	2	20	24	0	0	0
15-Sep	10938	407	3192	172	3126	372	1196	97	0	0	1153	130	43	12	17	13	0	0	0
Wkly Tot	51977	3138	17972	1586	15508	2223	5062	482	0	0	5657	843	364	74	171	114	0	0	0
% Split	94.3%	5.7%	91.9%	8.1%	87.5%	12.5%	91.3%	8.7%	0.0%	0.0%	87.0%	13.0%	83.1%	16.9%	60.0%	40.0%	0.00%	0.00%	
Spill Gates on seal																			

The Dalles Dam Collection Channel Velocities (fps)

8/29/2012 9/4/2012 9/10/2012



The Dalles Adult Ladder Water/River Temperatures



The Dalles Dam Daily Bird Observations

Washington Shore

SW-T1: Cormorant 0-2 resting, 0-1 foraging; Osprey

SW-T3: Cormorants 1-28 resting, 0-2 foraging; Gull 0-7 resting, 0-3 foraging

SW-T4: Cormorants 0-10 flying by, 0-3 resting, foraging 0-1; Gull 0-8 resting

FB1: Cormorants 0-74 resting, 0-2 foraging; Grebe 0-4 resting; Heron 0-1 resting; Osprey 0-1 foraging, 0-1 flying by

SW-T2: Cormorants 0-2 resting, 0-2 foraging, Gull 0-1 flying by; Osprey 0-1 resting

PH-T1: Cormorants 10-46 resting, 0-4 foraging; Heron 0-1 foraging, 0-1 resting, 0-1 flying by; Merganser 0-1 resting; Gull 0-1 resting; Osprey 0-2 foraging, 0-1 resting, 0-1 flying by

PH-T2: cormorants 0-2 foraging, 0-1 resting; Osprey

PH-T3: Cormorants 0-3 flying by, 0-1 foraging; Osprey 0-1 flying by; Gull

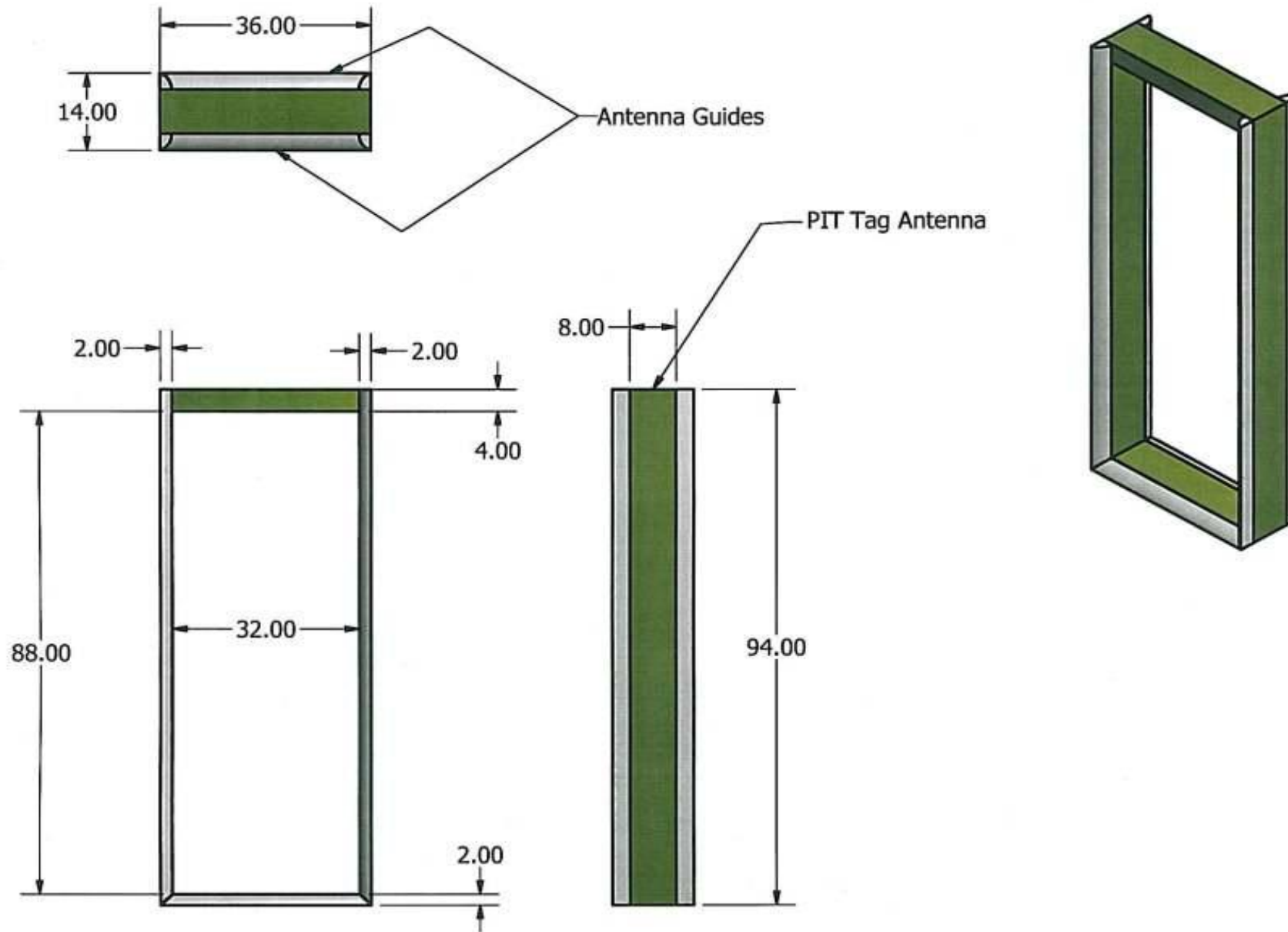
Oregon Shore

Temp:			Secchi:	
	68.2	SUN		5.0
	67.5	MON		5.0
	66.9	TUES		5.0
	67.2	WED		7.0
	67.3	THUR		5.0
	67.2	FRI		4.5
	67.3	SAT		5.0
AVG:	67.4	AVG:		5.2

The Dalles Dam Daily Readings and Averages for Temperatures, Secchi, Entrances, and Spill

North Fish Ladder			East Fish Ladder													
North Entrance			East Entrance					West Entrance				South Entrance				
Date:	Differential	N1 Depth	Differential	E1Depth	E2 Depth	E3 Depth	JP 6	Differential	W1Depth	W2 Depth	W3 Depth	Differential	S1 Depth	S2 Depth	% Spill	
9/9/12	1.3	9.0	1.5	8.5	9.6	9.6	7.8	1.5	8.2	8.1		1.5	8.3	8.3		
9/9/12	1.2	9.1	1.5	8.9	9.9	9.9	7.5	1.3	8.2	8.3		1.4	8.5	8.5		
9/9/12			1.4	9.0	10.0	10.0		1.3	8.2	8.3		1.5	8.4	8.5		
9/10/12	1.3	9.0	1.4	9.9	9.9	10.0	7.6	1.4	8.1	8.1		1.5	8.2	8.2		
9/10/12	1.3	9.1	1.5	8.1	8.1	10.0	8	1.4	8.0	8.0		1.5	8.5	8.5		
9/10/12			1.4	9.0	10.0	10.1		1.4	8.2	8.2		1.5	8.2	8.3		
9/11/12	1.2	9.0	1.5	8.9	10.0	10.1	7.4	1.4	8.1	8.1		1.4	8.5	8.6		
9/11/12	1.4	9.0	1.6	9.0	9.9	9.0	8.7	1.2	8.2	8.2		1.3	9.5	9.5		
9/11/12			1.6	8.0	10.0	10.1		1.4	8.2	8.2		1.4	8.6	8.5		
9/12/12	1.3	9.0	1.6	8.9	9.9	10.0	7.4	1.5	8.0	8.1		1.3	8.1	8.1		
9/12/12	1.4	9.1	1.7	9.0	9.9	9.9	8.7	1.4	8.1	8.2		1.5	9.0	8.9		
9/12/12			1.7	9.0	10.0	10.1		1.2	8.3	8.2		1.1	9.5	9.5		
9/13/12	1.2	9.0	1.5	5.0	11.1	11.0	7.2	1.3	8.1	8.1		1.4	8.5	8.4		
9/13/12	1.2	9.1	1.4	5.0	10.9	11.1	7.8	1.2	8.5	8.4		1.4	8.5	8.5		
9/13/12			1.4	9.0	9.9	10.1		1.3	8.2	8.0		1.3	9.0	9.0		
9/14/12	1.3	8.9	1.5	5.1	11.0	11.0	7	1.2	8.3	8.4		1.4	8.6	8.6		
9/14/12	1.3	9.2	1.6	5.0	10.9	11.0	8	1.3	8.2	8.4		1.5	8.6	8.4		
9/14/12			1.5	4.9	11.0	11.0		1.3	8.3	8.2		1.4	8.6	8.6		
9/15/12	1.4	9.0	1.6	5.9	10.9	11.0	8.1	1.3	8.3	8.4		1.6	8.4	8.5		
9/15/12	1.5	8.9	1.6	6.0	9.0	9.1	8	1.3	8.3	8.3		1.4	8.6	8.4		
9/15/12			1.5	5.1	11.1	11.1		1.4	8.3	8.2		1.5	8.4	8.5		
AVG:	1.3	9.0	1.5	7.5	10.1	10.2	7.8	1.3	8.2	8.2	Closed	1.4	8.6	8.6	On seal.	
Third fish way inspection for east fish ladder, east, west, and south entrances completed via automation system in fisheries office.																

PSMFC - Thin Wall PIT Tag Antenna Concept



Rev 0, 8/30/2012, ACB